



February 5, 2021

Re: Information on a Duke Energy reliability project planned for your community – Sharonville to Reading Pole Replacements

Dear Neighbor:

Duke Energy is committed to providing cost-effective and reliable energy to your homes, schools and businesses. As part of that commitment, we are developing plans to replace poles on a 69-kilovolt (kV) transmission line in Hamilton County.

The project involves upgrading 25-30 poles on the transmission line that runs from the intersection of Lebanon Road and Reading Road to the intersection of Fuhrman Road and Ridge Road (see map enclosure). Although we do not plan to begin construction until the fourth quarter of 2021, our crews may be examining an easement on or near your property beginning in February. This review will help us develop plans that allow for the work to be done safely and efficiently while minimizing environmental impacts.

COVID-19 and Work in Your Community

As one of the many essential services responding to this national emergency, our work continues – even in those areas with stay-at-home ordinances. The upgrades to the electric transmission system are essential projects that require our team members to work in and around your neighborhood.

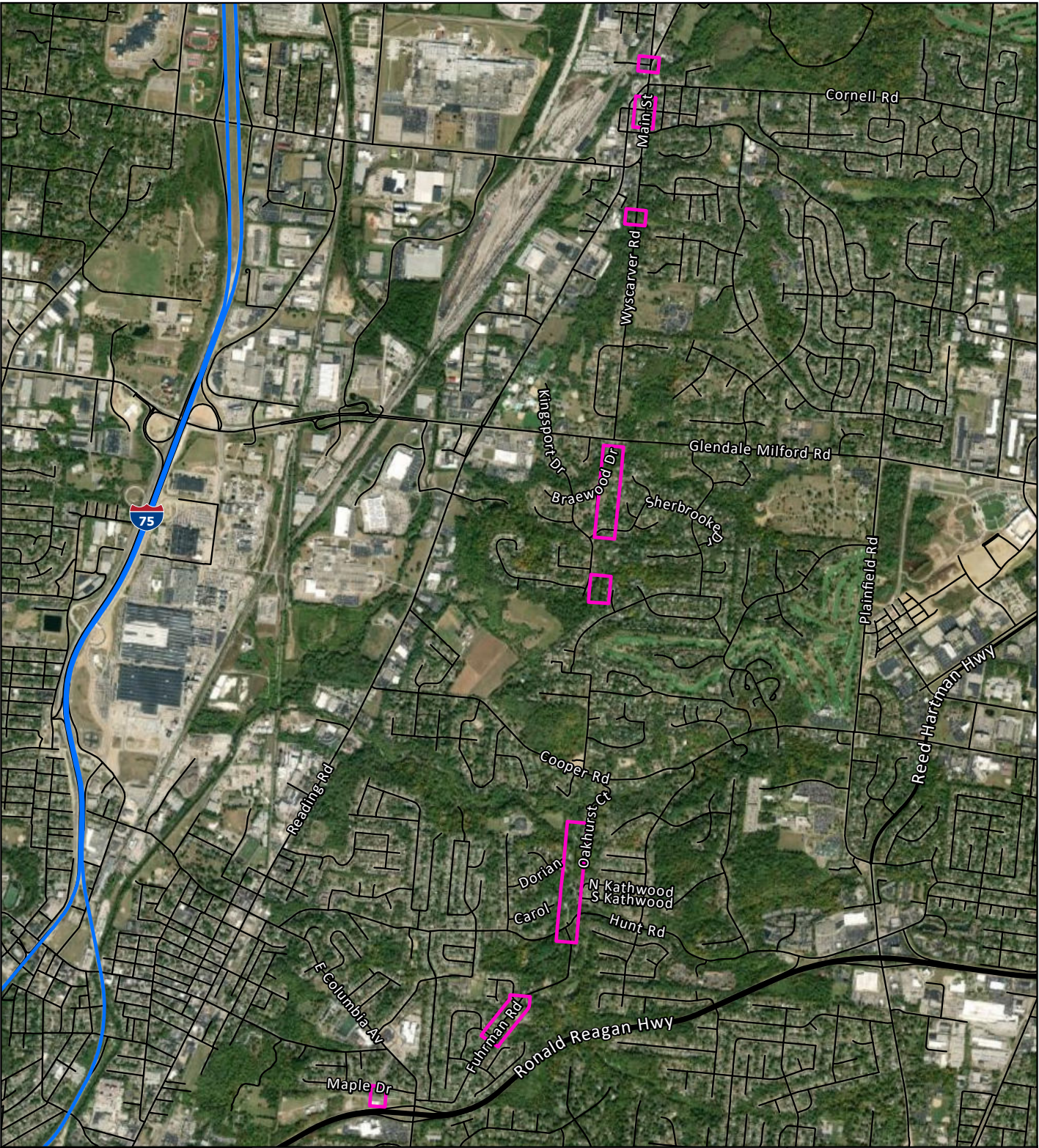
As a precaution, please avoid approaching our team members and their work areas. If there is a need to speak with a Duke Energy representative, please contact us at 888.827.5116 (toll-free) or MWOHioTransmission@duke-energy.com.

As the project moves forward, we will provide you with updates on our activities. We appreciate your cooperation as we work to meet your current and future energy needs.

Sincerely,

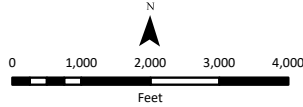
Christi Schorr
Project Manager for Duke Energy

Enclosure



 Project Areas

Not drawn to scale. Line location is an approximation, and does not indicate access routes or work areas.



REFERENCE: Basemap: Esri Aerial Imagery Service, Accessed 1/29/2021, Duke Assets: Duke Energy



**Sharonville to Reading
Pole Replacement Project**

Cincinnati - Ohio