



***"Everywhere  
is within  
walking  
distance  
if you have  
the time."***

-- Steven Wright

**Walking is man's  
best medicine.**

~ Hippocrates



# TRAILS OF EVENDALE GUIDE



- 1. Where neither sidewalk nor shoulder is available, pedestrians shall walk as near to the outside edge of the roadway and only on the left side of the roadway, facing traffic. Any pedestrian upon a roadway, shall yield the right-of-way to all vehicles upon the roadway.**
- 2. Obey traffic signs AND SIGNALS.**
- 3. Look both ways before crossing streets/roadways.**
- 4. Keep pets on a leash and under control at all time.**
- 5. Be courteous and always clean up after your pet.**
- 6. Place trash in receptacles.**
- 7. Be alert for different kinds of terrain.**
- 8. Recommend not to use the trail after dark.**
- 9. Keep off private property.**
- 10. Report suspicious or dangerous behaviors to the police. Call 911 for emergencies.**

# **TRAIL GUIDELINES**



**Always travel  
with a partner!**



# Evendale Municipal Complex Trails

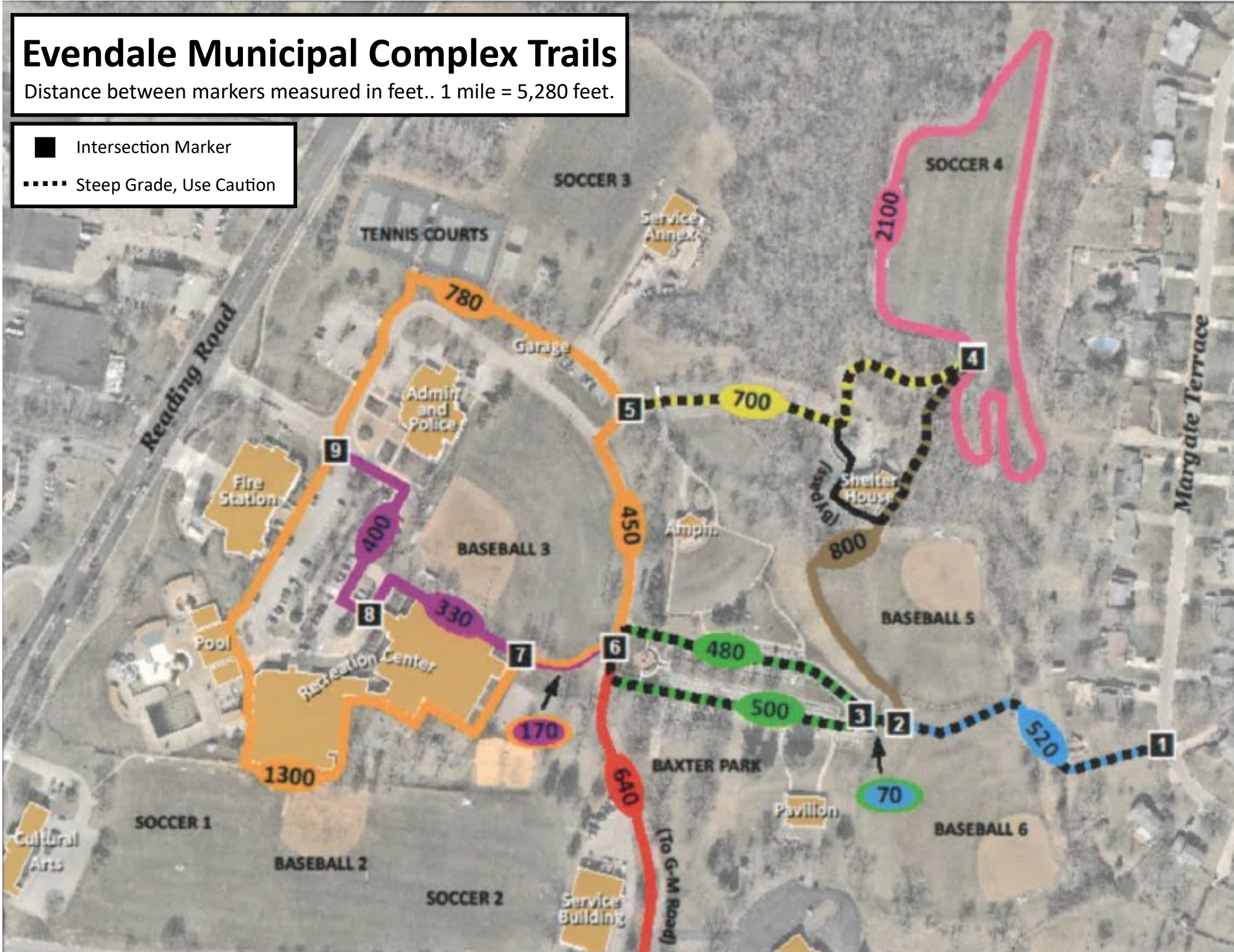
Distance between markers measured in feet.. 1 mile = 5,280 feet.



Intersection Marker



Steep Grade, Use Caution





# LEISURE TRAIL SYSTEM



## Approximate Distances

- 1 to 2 = .7 miles
- 5 to 6 = 1+ miles
- 6 to 7 = .3 miles
- 8 to 9 = .1 miles
- 1 to 8 = .2 miles

## LEGEND

Paved Trail

Unpaved Trail

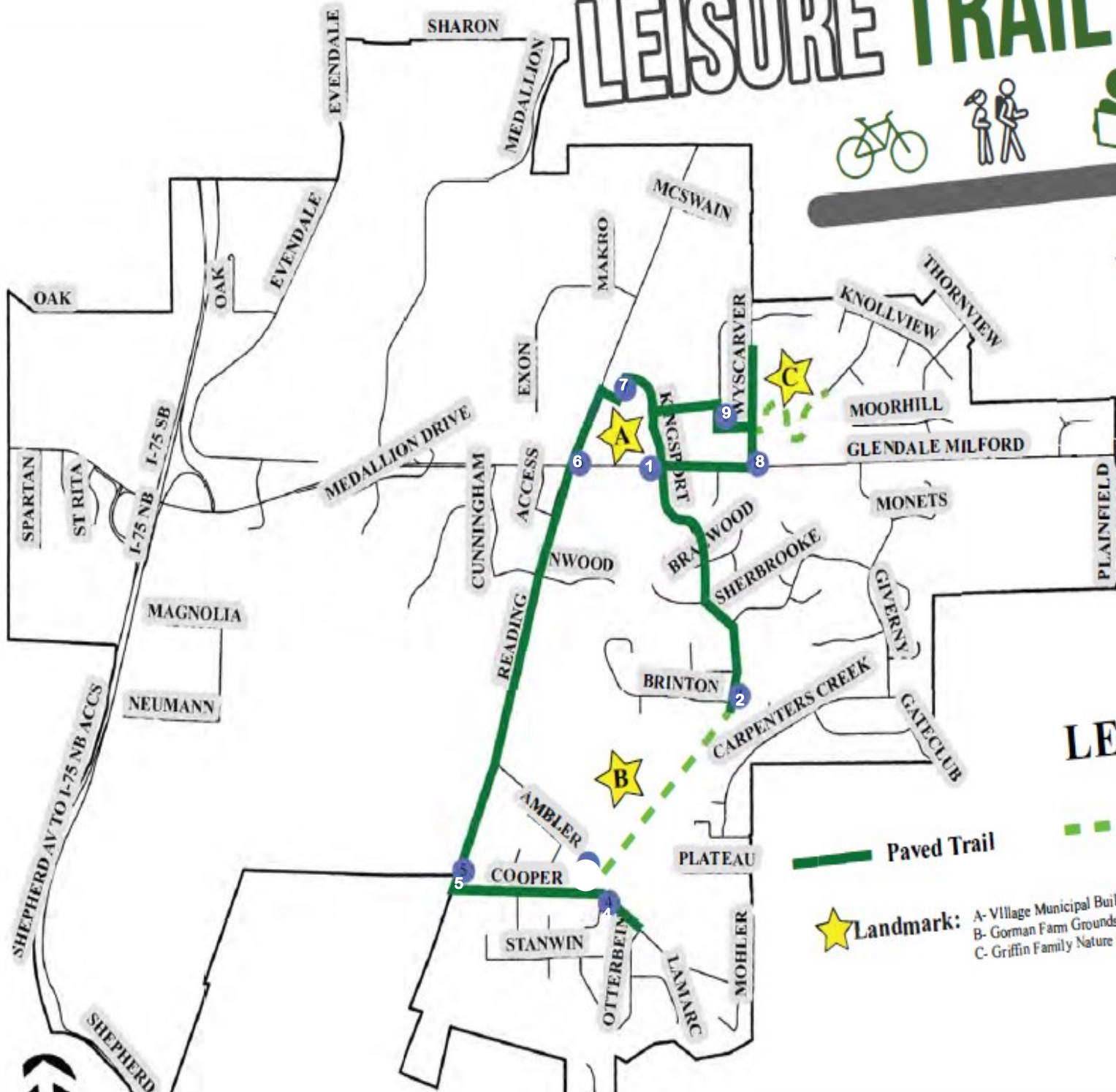
Streets

Evendale Boundary



Landmark:

- A- Village Municipal Building
- B- Gorman Farm Grounds
- C- Griffin Family Nature Preserve





# Gorman Heritage Farm

## TRAIL MAP

### Difficulty Rating

#### EASY:

Creek Trail

Upper Meadow Trail

Kingsport Trail

#### INTERMEDIATE:

Jimmy's Trail

Evendale Trail

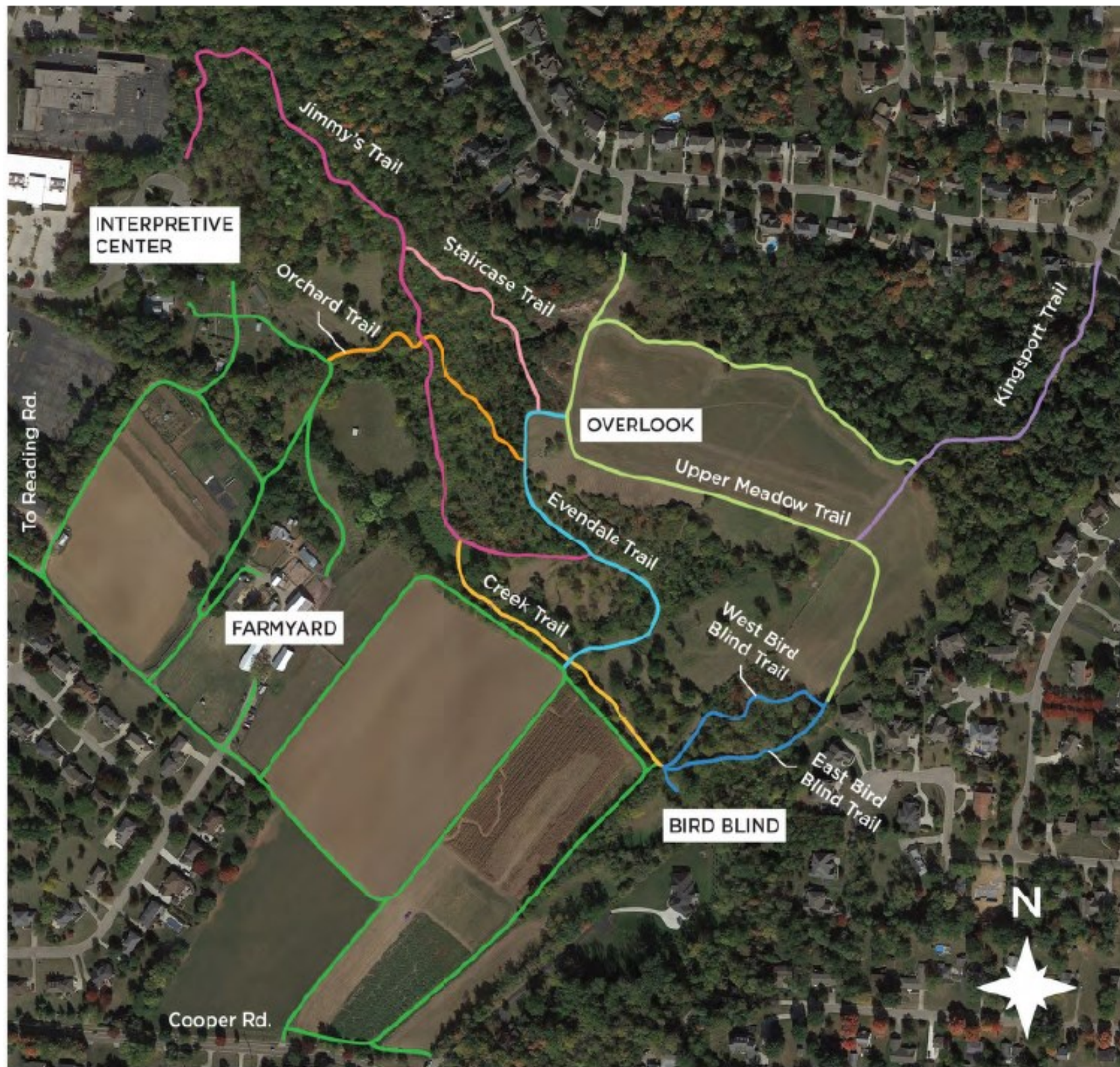
West Bird Blind Trail

East Bird Blind Trail

#### HARD:






Orchard Trail

Staircase Trail







	<b>Wildflower Trail</b> .27 miles Easy
	<b>James Owens Creek Trail</b> .33 miles Rough
	<b>Horncastle Trail</b> .11 miles Moderate
	<b>Pond Trail</b> .15 miles Moderate
	<b>Animal Blind Trail</b> .04 miles Rough

 A Parking

 B Pond

# GRIFFIN FAMILY NATURE PRESERVE MAP



**PROVIDES  
CONNECTIVITY TO  
NEIGHBORHOODS  
AND AMENITIES**

**RECREATION  
FOR DIVERSE USERS**



**CONNECT WITH  
EXISTING AND  
PROPOSED  
TRAILS**

**HEALTH AND  
PHYSICAL FITNESS**

**TRAIL  
BENEFITS**

**ENVIRONMENTAL**

**QUALITY EDUCATION OPPORTUNITIES**



**INCREASED  
PROPERTY  
VALUE**

**TRANSPORTATION  
ALTERNATIVE**

**PROMOTES  
COMMUNITY  
ENRICHMENT  
AND CHARACTER**

*We hope you enjoy these **Trails of Evendale***



*I don't get it. The trail looked so flat on the map.*

~ Unknown